

See the Latest Patent Pending Features of the New

# **GoofProof** PAT. PEND. **WALL TRIMMER**™

## NEW FEATURES INCLUDE:

- **Automatic Blade Depth Adjustment Stop**
- **Super Strong Molded Plastic Frame Components**
- **Threaded Steel Inserts and Hardware**



- Cuts direct glue down carpet and unflexible carpet perfect the first time
- Beginner to professional cuts in under 60 seconds
- Trims soft sheetgoods easily
- Cuts covebase toe and carpet in one pass
- Uses standard slotted blades
- Patented design feels like an extension of your hand
- Use with left or right hand

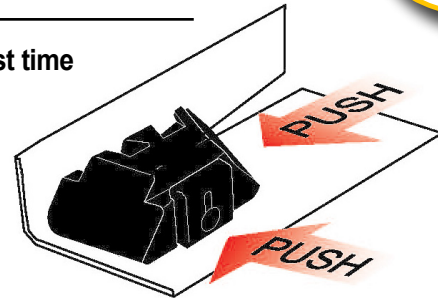
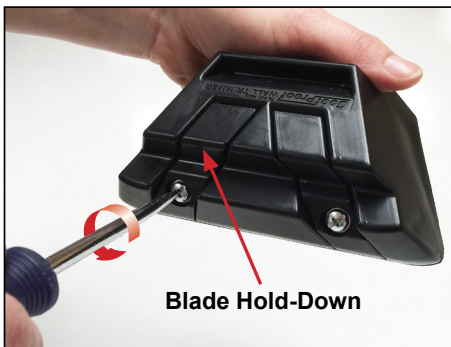
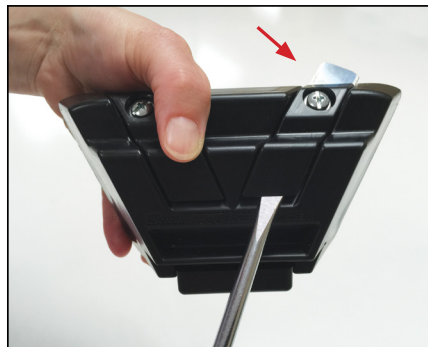


Illustration shows right hand cutting position

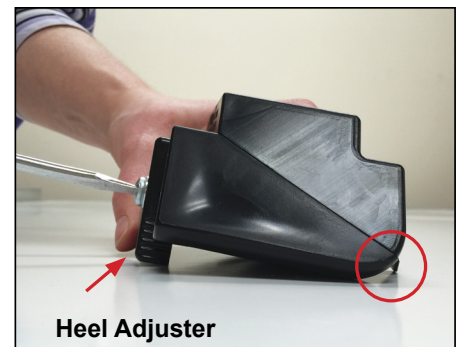
## Set-Up is as Simple as 1 • 2 • 3



Step 1 Loosen Blade Hold-Down screw 1/4 turn.



Step 2 Insert screwdriver into slot, pushing blade until screwdriver automatically stops. Then tighten Blade Hold-Down screw.



Step 3 Loosen screw and move Heel Adjuster down until blade contacts surface. Then tighten screw.

**The Goof Proof Wall Trimmer™ is now set to cut direct glue down carpet or loose lay materials flush with the wall.**

- To make longer cuts: Reposition Heel Adjuster up
- To make shorter cuts: Reposition Heel Adjuster down
- To cut carpet and toe of covebase at the same time: Extend blade an extra 1/8 inch out and reposition Heel Adjuster up until Goof Proof Wall Trimmer™ base lays flat on surface

(Tip: Running a damp rag in front of trimmer while cutting soft sheetgoods, will allow trimmer to slide more easily as cut is being made.)



by **ProKnee**®